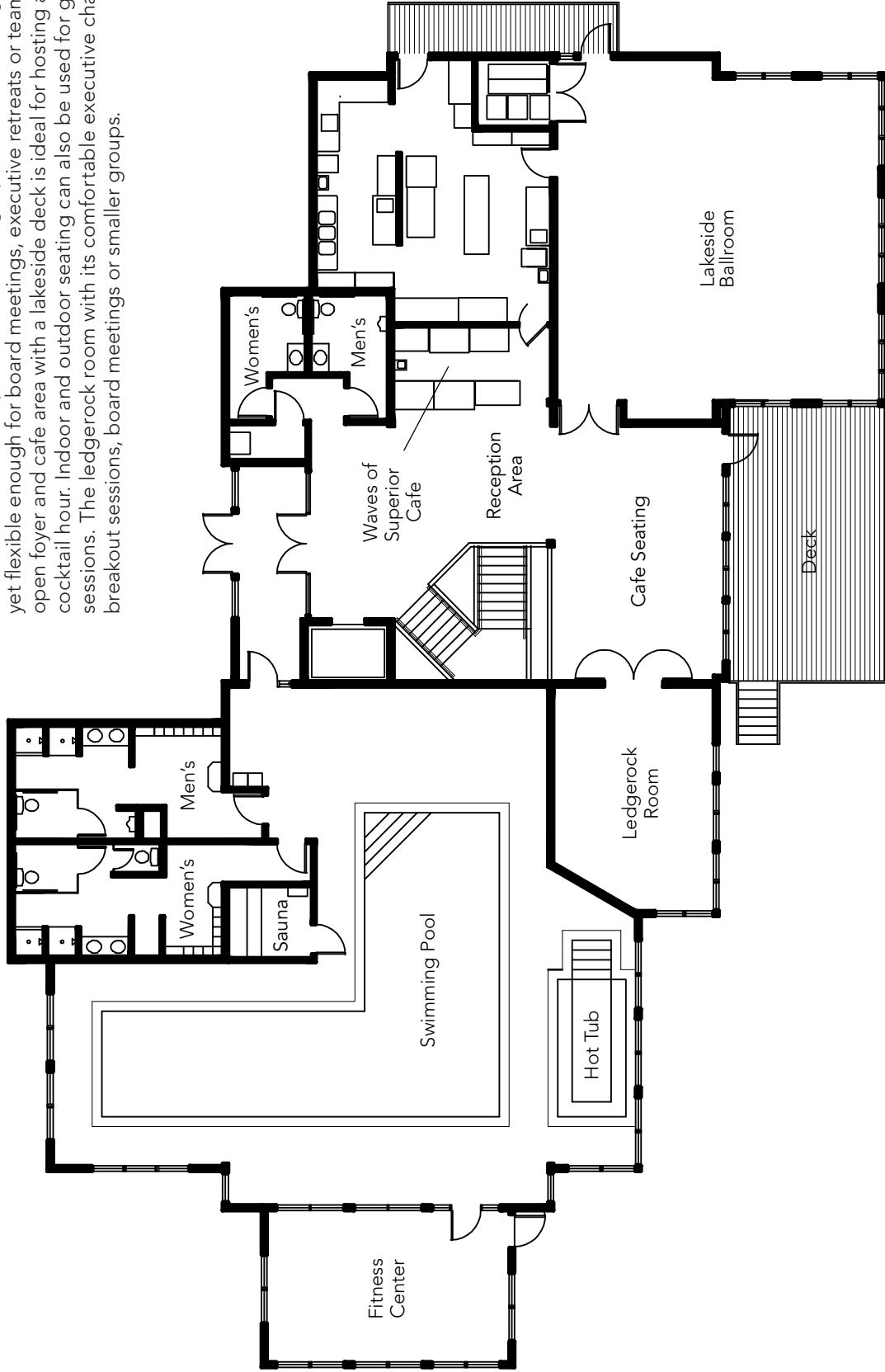


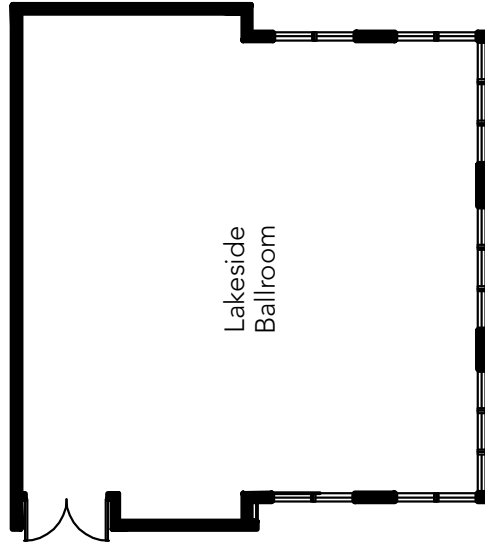
## Meeting & Event Facilities

## Surfside Floor Plans

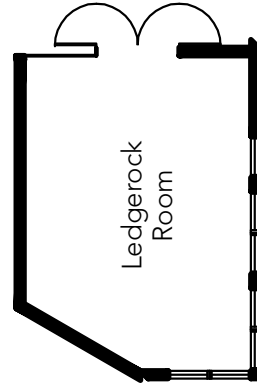
Our new, state-of-the-art meeting and event facility at Surfside offers the ultimate in quality, flexibility, style and comfort. The grand lakeside ballroom has vaulted ceilings, wall-to-wall windows offering lake views, flexible table and seating arrangements, and a new banquet kitchen, making it perfect for weddings and banquets, yet flexible enough for board meetings, executive retreats or team trainings. The open foyer and cafe area with a lakeside deck is ideal for hosting a reception or cocktail hour. Indoor and outdoor seating can also be used for group breakout sessions. The ledgerrock room with its comfortable executive chairs is ideal for breakout sessions, board meetings or smaller groups.



## Meeting & Event Facilities

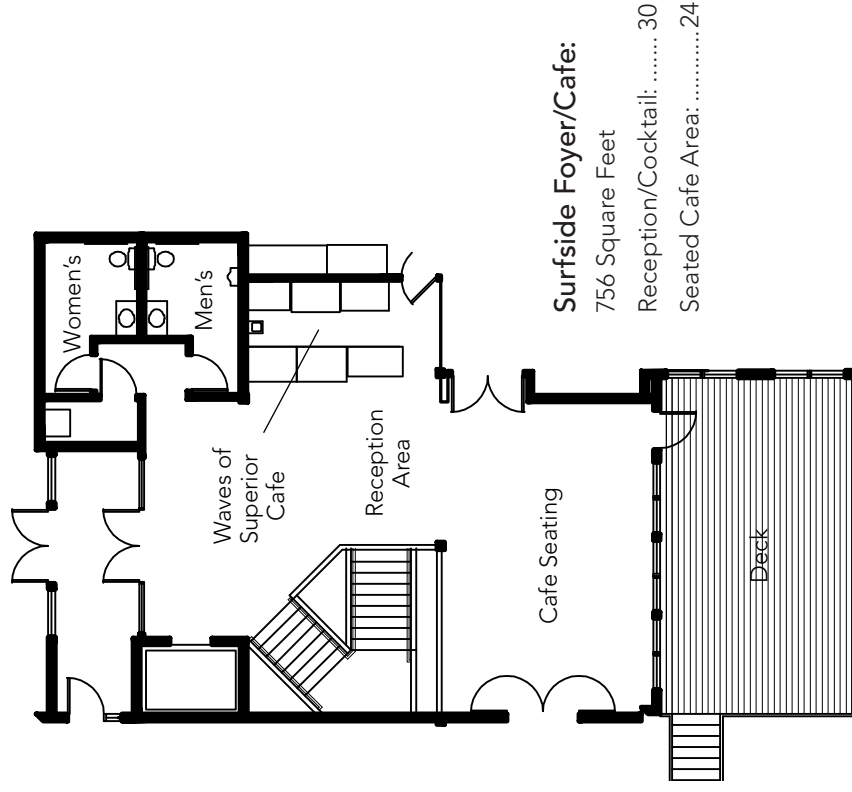


**Lakeside Ballroom**  
 1089 Square Feet  
 33' x 33'  
 Banquet: ..... 90  
 Theater: ..... 80  
 Classroom: .... 48  
 Rectangle: ..... 36  
 U Shape: ..... 33



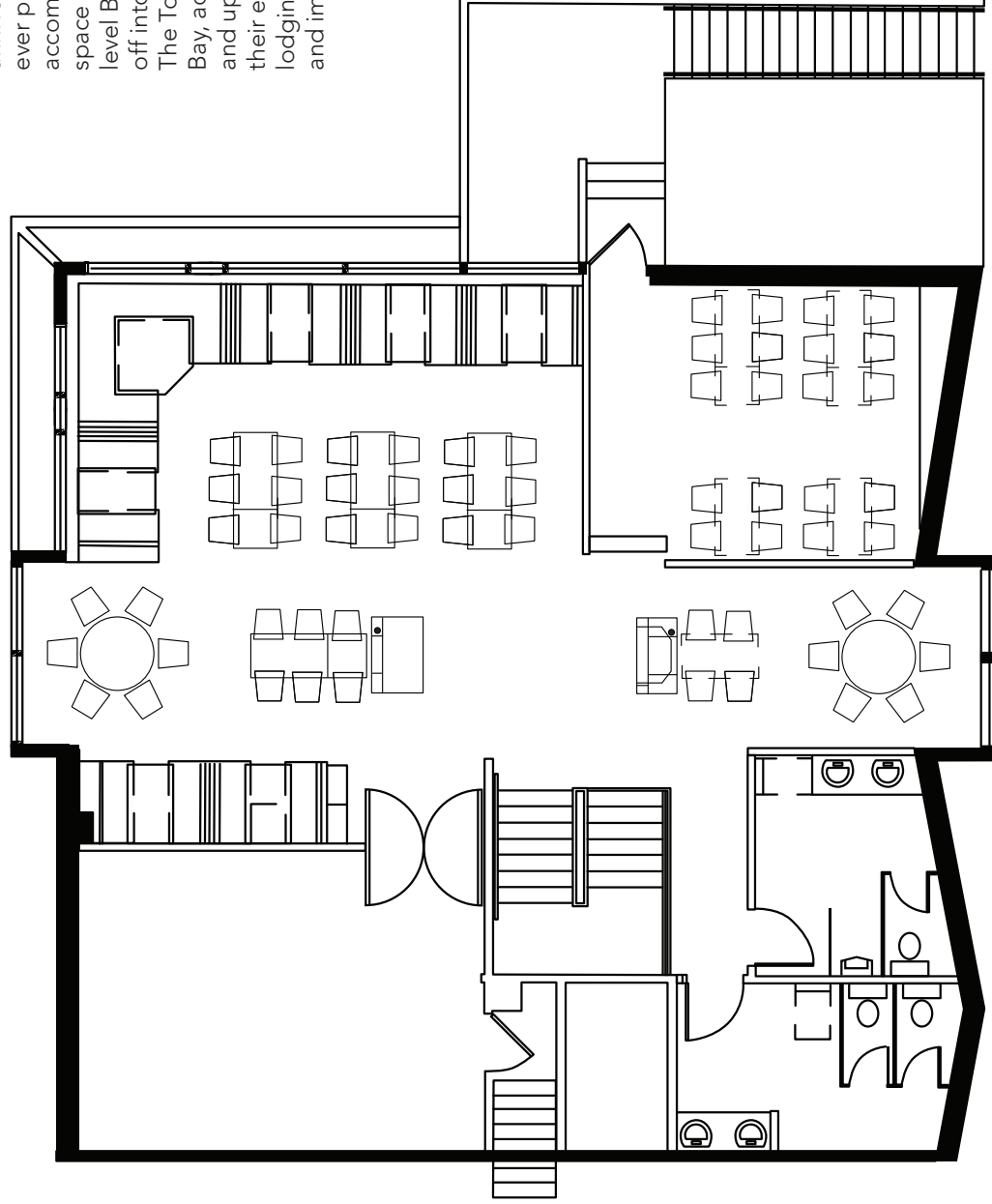
**Ledgerrock Room**  
 350 Square Feet  
 23' x 16'  
 Banquet: ..... 36  
 Theater: ..... 36  
 Classroom: .... 18  
 Rectangle: ..... 20  
 U-Shape: ..... 17

## Surfside Floor Plans



**Surfside Foyer/Cafe:**  
 756 Square Feet  
 Reception/Cocktail: ..... 30  
 Seated Cafe Area: ..... 24

Bluefin Bay has been a premier wedding and event destination for 25 years, hosting wedding rehearsal dinners, wedding ceremonies, receptions, dances, anniversary parties, family reunions, and more. Our ever popular Bluefin Grille Upstairs Dining Room accommodates groups up to 75 and offers an open space all on one level with vast lake views. The main level Bluefin Grille, also with lake views, can be sectioned off into a private dining or meeting area in the back. The Tofte Room, our main conference room at Bluefin Bay, accommodates 20-36 for a banquet or meeting, and up to 40 for a reception. Guests choosing to host their event at Bluefin Bay enjoy the proximity to Bluefin lodging and outdoor amenities, as well as the flavorful and imaginative cuisine of our award-winning restaurants.



**Bluefin Grille – Upper**

1040 Square Feet

40' x 26'

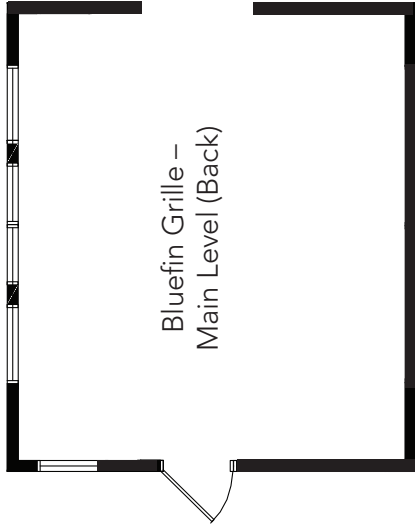
Banquet:.....75

Rectangle:.....30

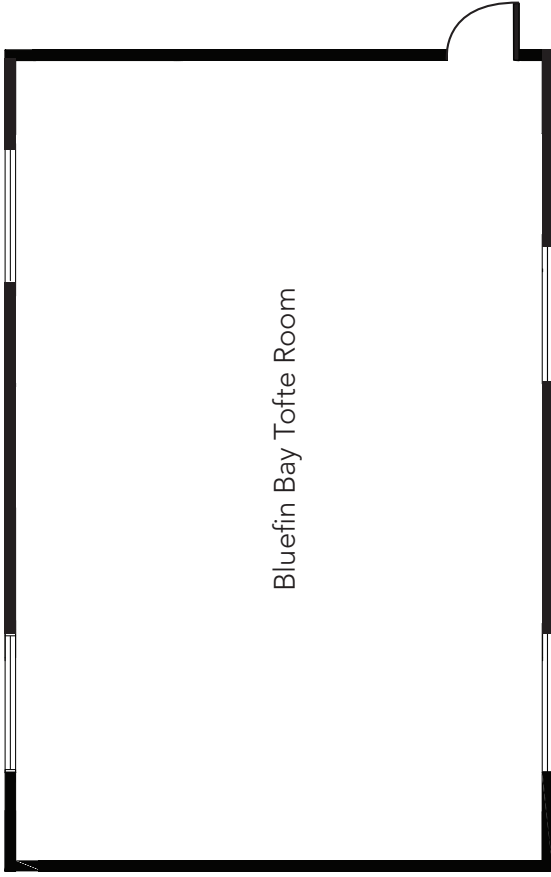
U-Shape:.....34

## Meeting & Event Facilities

## Bluefin Bay Floor Plans



Bluefin Bay Tofte Room



### Bluefin Grille – Main Level (Back)

252 Square Feet  
18' x 14'  
Banquet:.....24  
Rectangle: .....14  
U-Shape:.....20

### Bluefin Bay Tofte Room

600 Square Feet  
20' x 30'  
Banquet:.....36  
Theater:.....36  
Classroom:.....30  
Rectangle: .....24  
U-Shape:.....20

**Bluefin Bay** FAMILY OF RESORTS

**BluefinBay**  
ON LAKE SUPERIOR  
1-800-BLUEFIN (258-3346)  
bluefinbay.com

**Surfside**  
on lake superior  
1-877-361-SURF (361-7873)  
surfsideonsuperior.com

**TEMPERANCE**  
**LANDING**  
ON LAKE SUPERIOR  
1-877-SCENIC61 (723-6426)  
temperancelanding.com